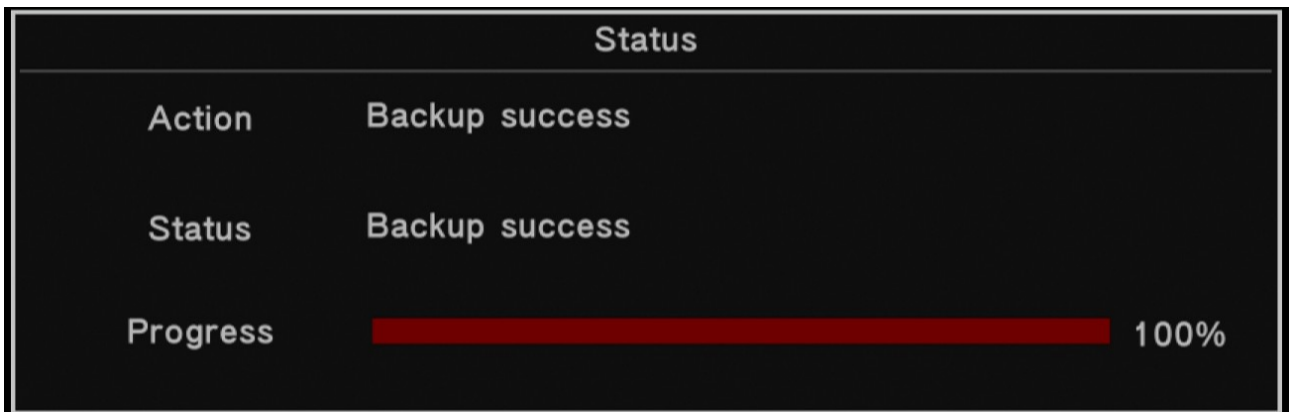
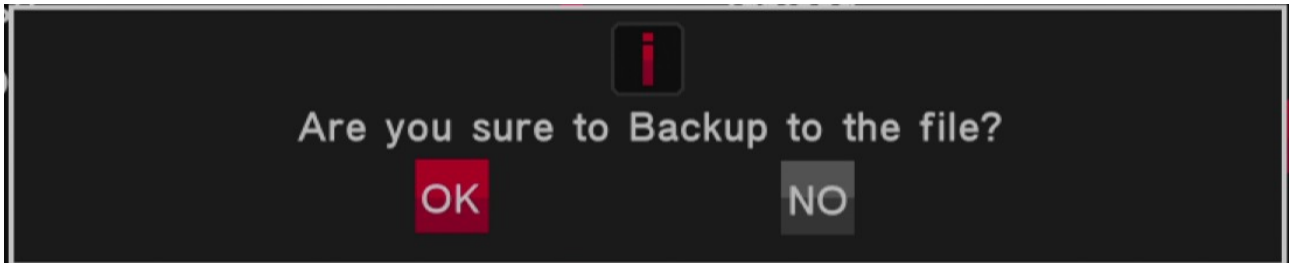


# Ferguson Channel Editor User Manual

## 1 . Summary

To edit the channel list please use the \*.ssu file (Menu►Upgrade►USB Backup►User Database).



## 2. Instructions

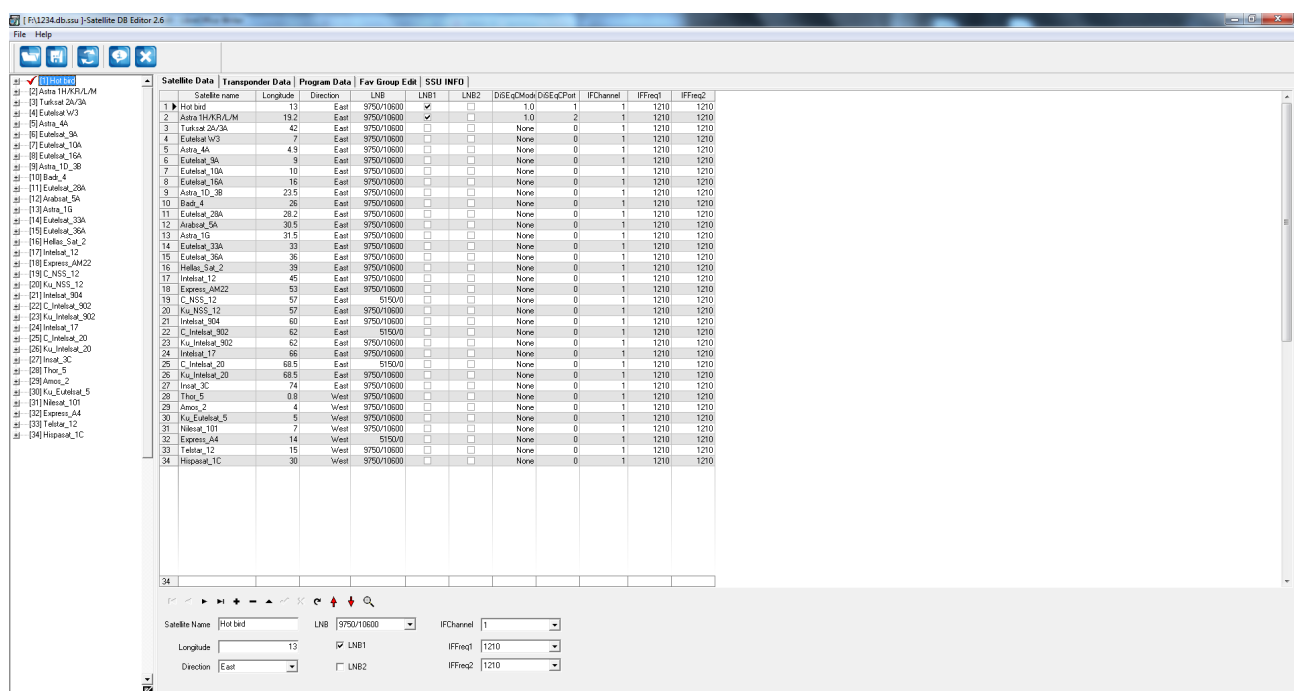
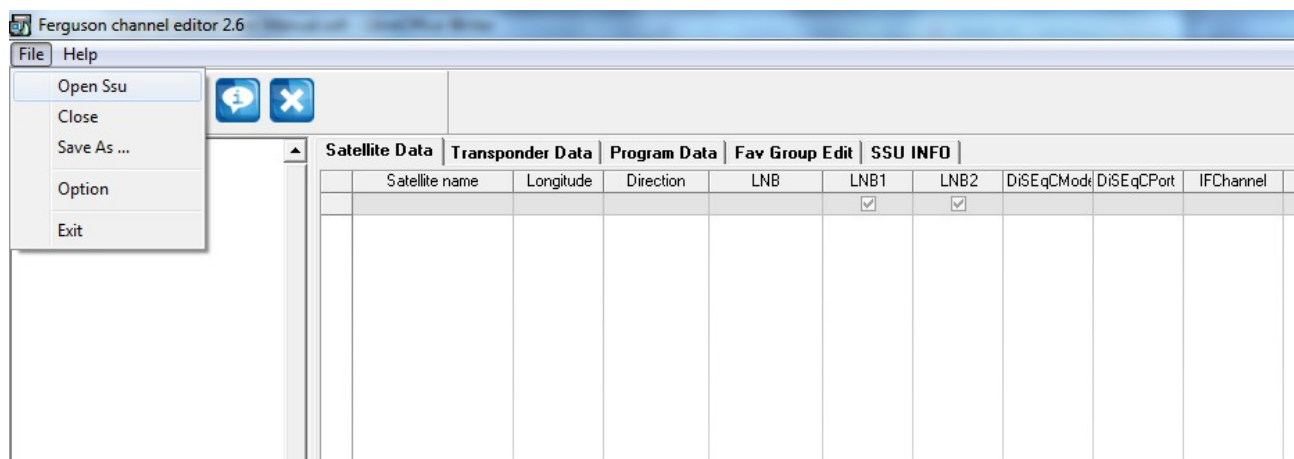
### 2.1 Run environment and Setup

- Start OS: WindowsXp/Windows7.
- Install the tool: run Ferguson\_Setup.exe and install it on the PC.

### 2.2 Operation

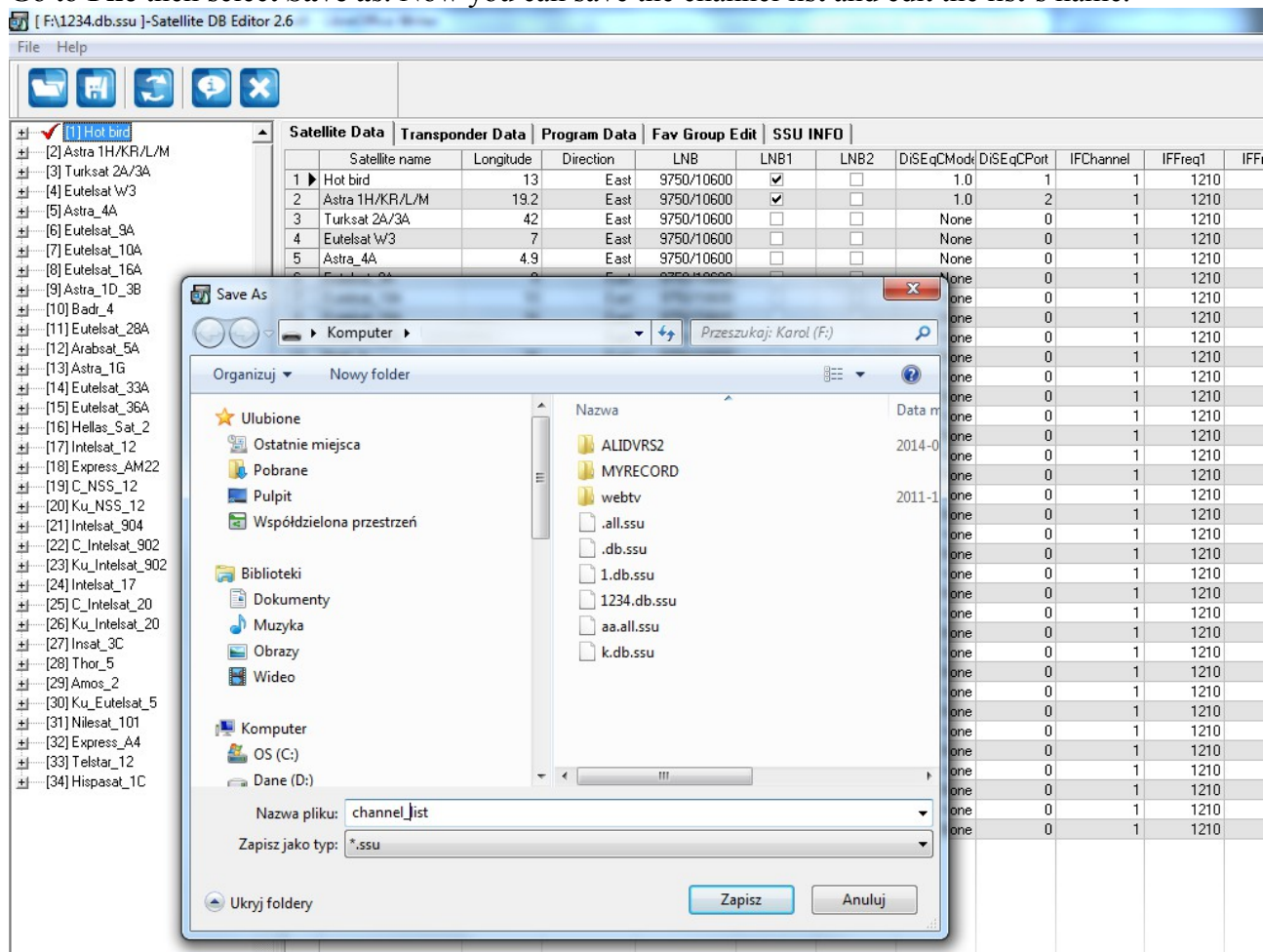
#### 2.2.1 Open User Database

- In the editor tool click **File**.
- Select **Open Ssu** from the bottom dropdown.
- Select your .ssu file you want to edit and open.



## 2.2.2 Save User Database


Go to **File** then select **Save as**. Now you can save the channel list and edit the list's name.





## 3. Edit User Database


Navigator




 : First record


 : Next record


 : Insert record

 : Edit record

 : Cancel Edit


 : Move Up

 : Prior record

 : Last record

 : Delete record

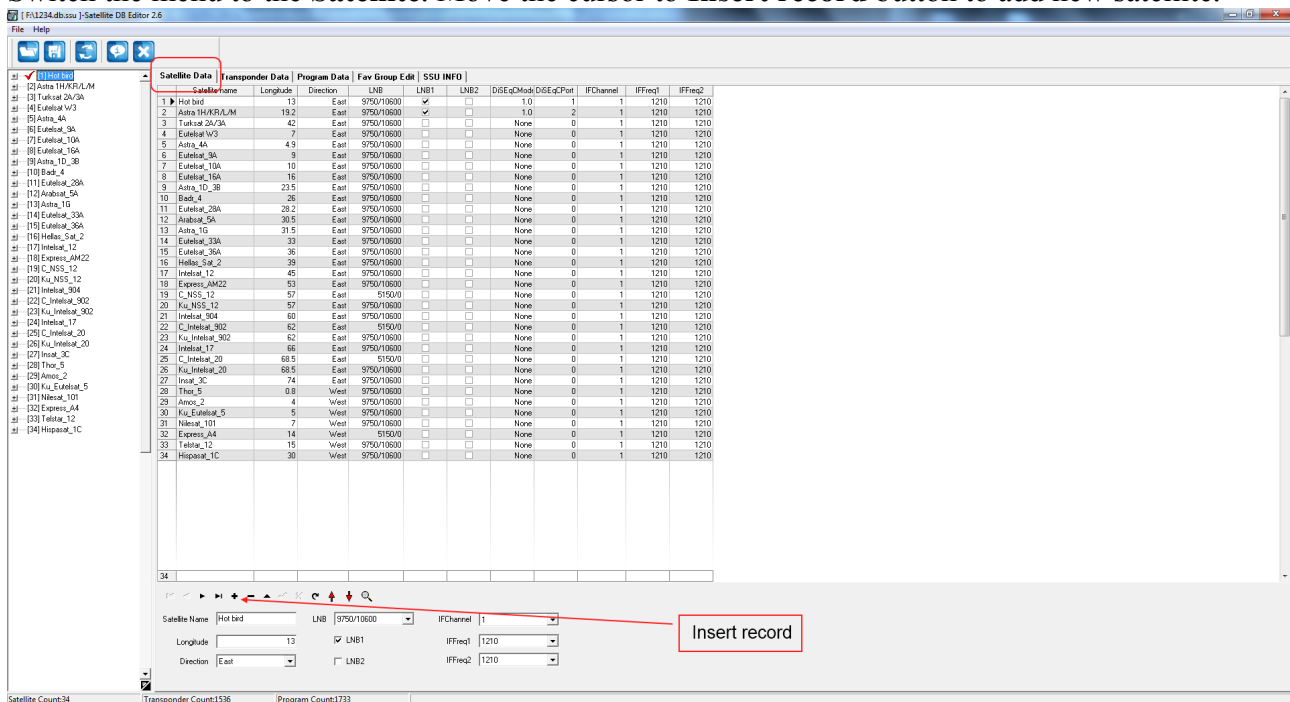
 : Post Edit

 : Refresh data

 : Move Down

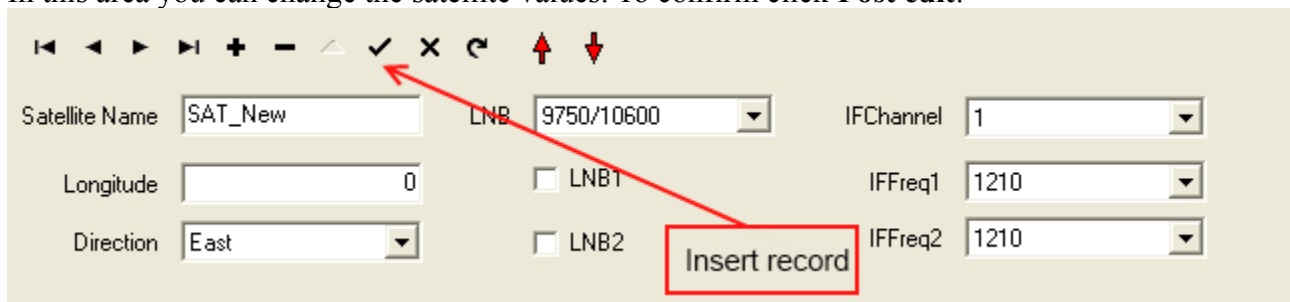
### 3.1 Add satellite

Switch the menu to the **Satellite**. Move the cursor to **Insert record** button to add new satellite.



### 3.2 Edit satellite

In this area you can change the satellite values. To confirm click **Post edit**.



Satellite Name: Maximum support 16 character

Longitude: value (0-180)

Direction: default value: East

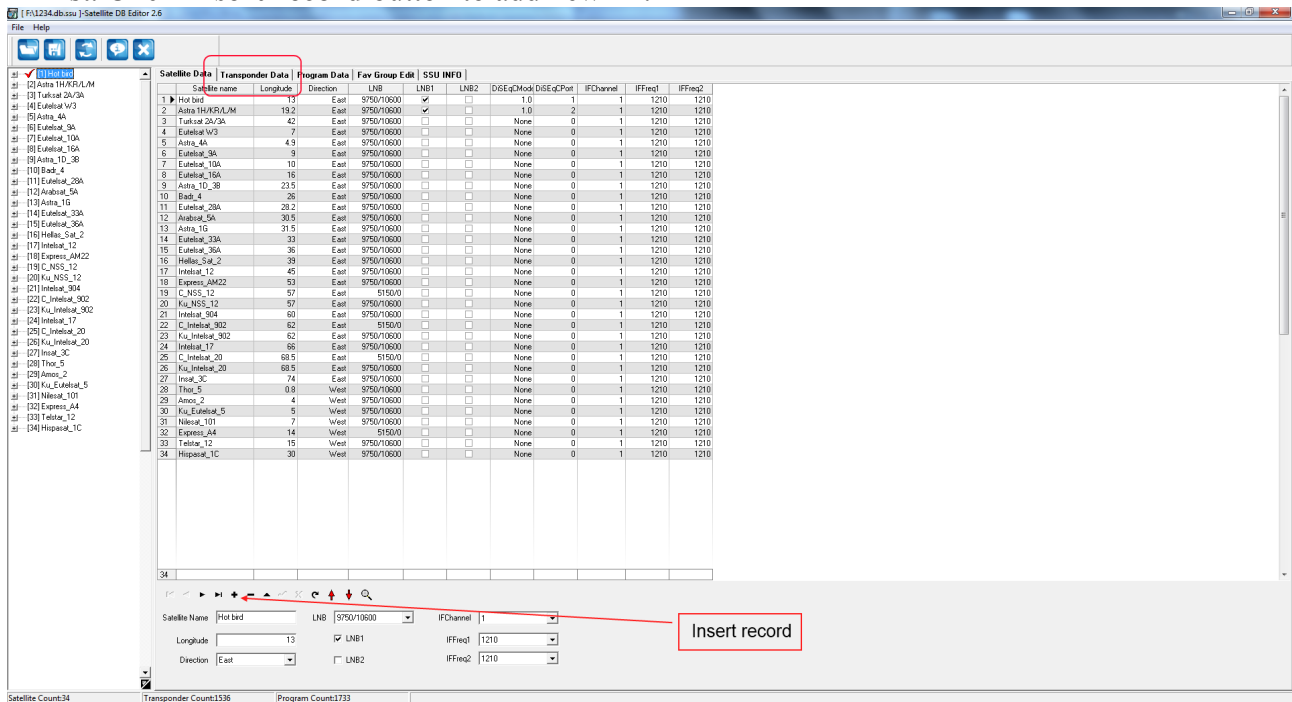
IFChannel : default value:1

IFFreq1: default value:1210

IFFreq2: default value:1210

### 3.3 Add TP

Select one satellite from the left window. Go to the **Transponder Data** and move the cursor to the TP list. Click **Insert record** button to add new TP.



### 3.4 Edit TP

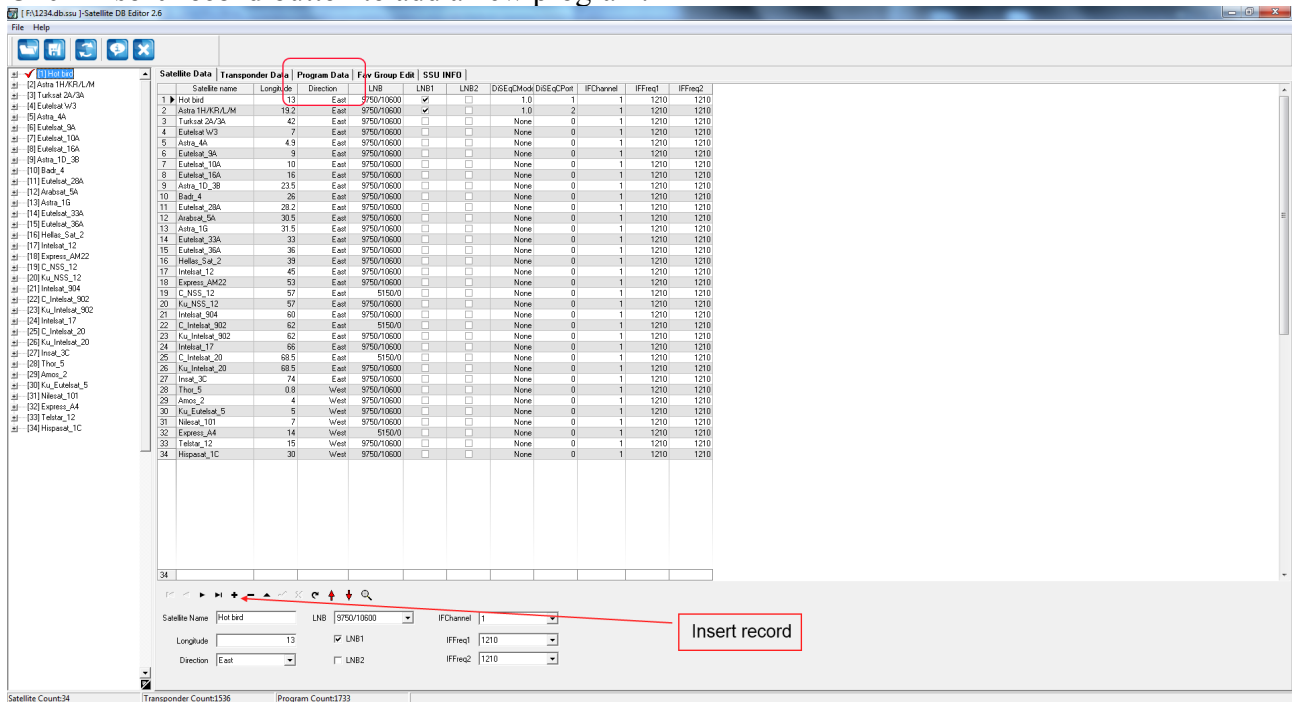
In this area you can change the transponder values. To confirm click **Post edit**.

The screenshot shows the transponder editing interface. It includes a toolbar with navigation and action icons. Below the toolbar are input fields for Frequency (4120 MHz), Symbol (27500 Ks), Polarization (Horizontal), Original Network ID (0), Transponder ID (0), and Network ID (0).

**Notes:** The user database support maximum 4280 transponders.

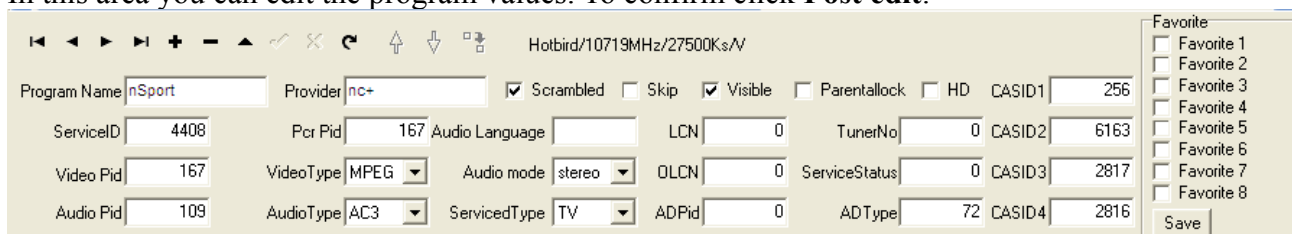
### 3.5 Add program

Select one TP from the left window. Go to the **Program Data**. Move the cursor to the Channel list. Click **Insert record** button to add a new program.



### 3.6 Edit program

In this area you can edit the program values. To confirm click **Post edit**.



**Note:** Select first one TP, then you can edit each channel's values.